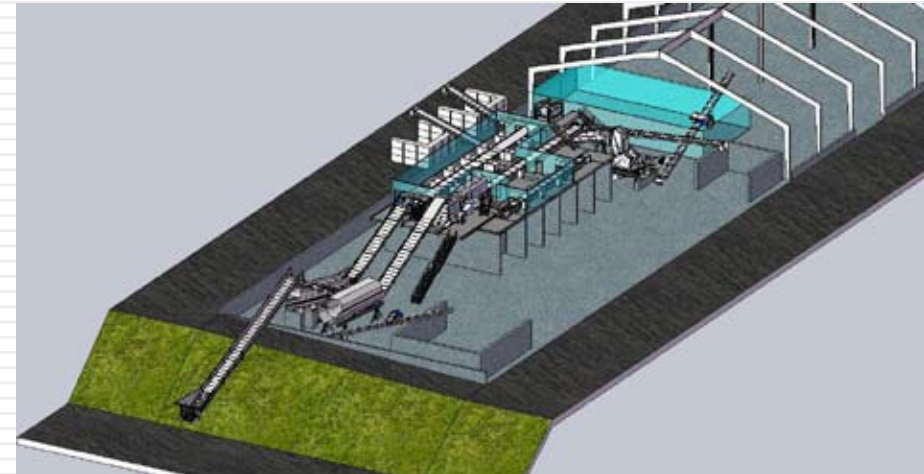
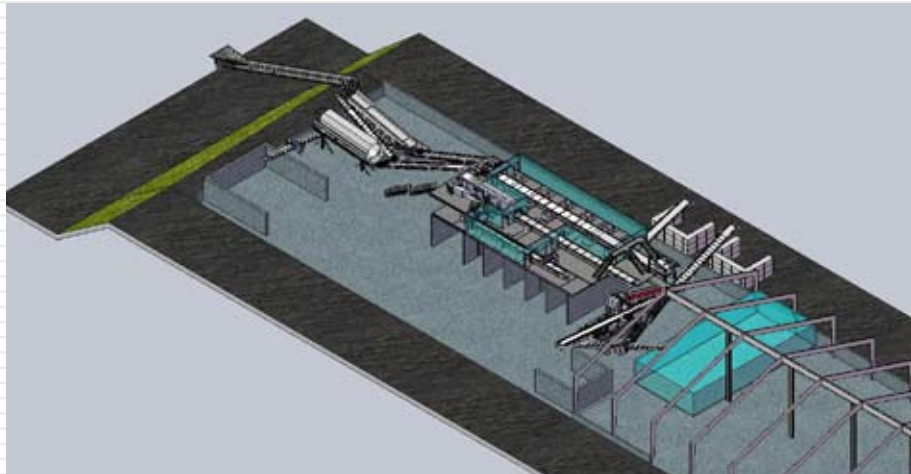




CONTINENTAL BIOMASS INDUSTRIES, INC.
STATIONARY & PORTABLE
BIOMASS RECOVERY SYSTEMS



CBI CASE STUDY - Zwicky Processing & Recycling, Inc., Robesonia, PA



Zwicky Processing & Recycling, Inc. was started as a land clearing business by Dave Zwicky over 30 years ago. In recent years, he decided to take his business to the next level in recycling. His son, Chris, contacted CBI and explained what they wanted to do. After several meetings, a design was completed to address their application needs for removing recyclables and grinding the residuals down to fuel a neighboring cement kiln. A new building is now under construction that will house the complete C&D System including, Large Primary Screen for separating out 12"- material, a Heavy-Duty Trommel for removing 1"- material. The 1" to 12" will then go through an Air Separator System to separate the heavies and lights thereby helping to reduce required man power. The 12"+ material will move onto a sorting table where recyclables will be picked out and the residuals will go through a 4860 Grizzly Mill. The picked wood will go directly to a 3660 Grizzly Mill and then be conveyed into the adjoining building. This system is scheduled to come on line in late Spring 2009.

Owner: Dave and Chris Zwicky
P. 610-693-5606