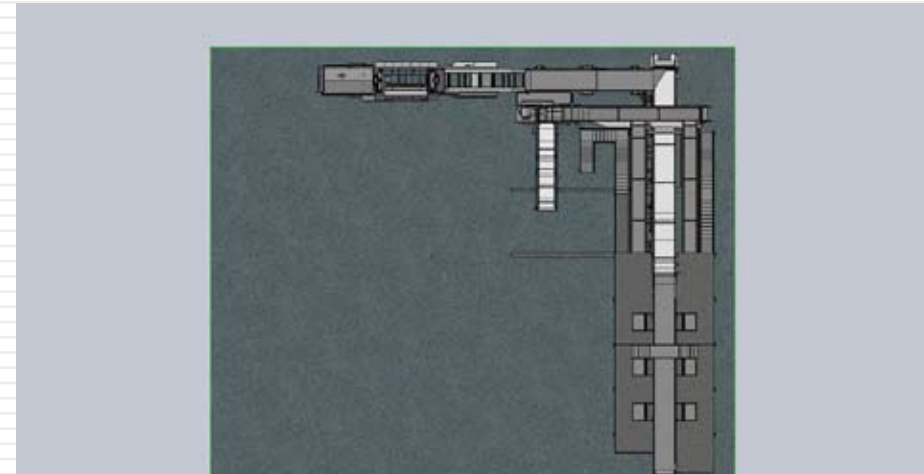
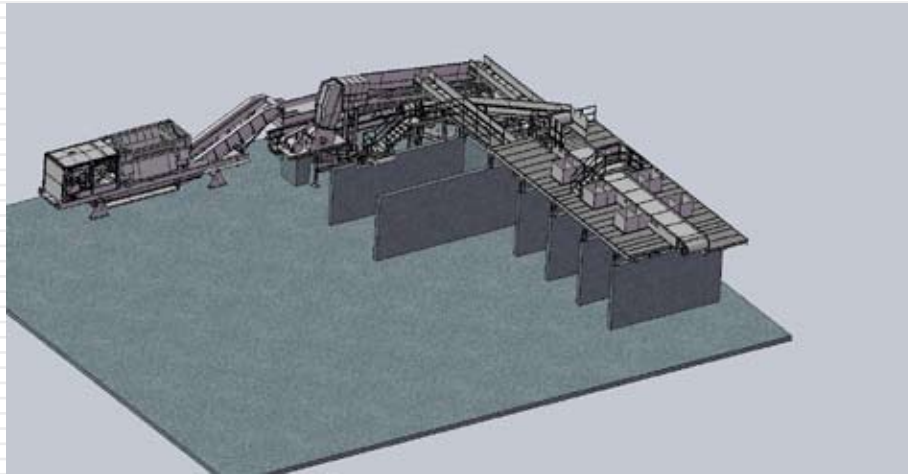




CONTINENTAL BIOMASS INDUSTRIES, INC.
STATIONARY & PORTABLE
BIOMASS RECOVERY SYSTEMS



CBI CASE STUDY - ACE Waste Services, S. Plainfield, NJ



Ace Waste Services, Newark, NJ, owned by John Glauda and Family, has three locations. They started out as a hauler and looked into the recycling side of the business to help to become more “Green”. They had an existing building that had a small footprint and found that they were missing a great deal of the recyclables by sorting on the floor. CBI was invited in to see what could be done in such a small space. The layout of the equipment needed to take up as little room as possible yet achieve their goals of recycling. The shredder was ideal in this application because it helped reduce the floor space needed to size the material in order for the system to work properly. Once sized to a rough 3 foot minus the 2” minus is removed by a taper slot screen. The remaining material goes to the picking station where all the sorters are able to pick wood from the waste stream into designated wood conveyors. The picked wood then is conveyed directly to the CBI Grizzly Mill to be ground for fuel. Other materials recovered and recycled are metal, plastic, aggregate, cardboard, etc.

Owner: John Glauda and Family
p. 908-756-5155
Established 1996